

SIGNAL HILL
maps:
J. H.
Marano.

Jack.

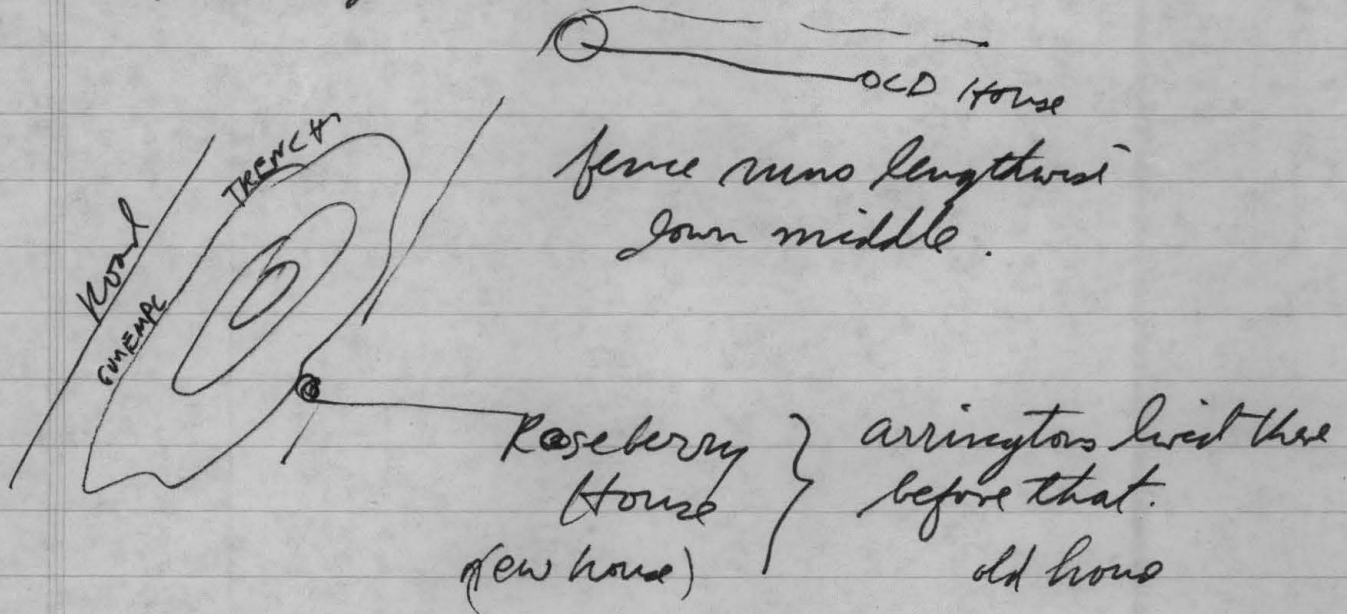
~~Ratcliffe Home int + changes~~

Signal Hill loc. on map.
sources
suggestions for photographs.

~~Bloom Hill. ??~~

~~Where was J. H. Burke House?~~

map of signal Hill?



Signal Hill ERC

Burial at Signal Hill Farm. Arrington Cem.

Sig. Hill Farm now owned by A. H. Roseberry

Richard Arrington Jr. d. 1849 age 61 yrs 11 mos 11 days

Mary J. Davis. d. 1860 36 yrs

J. T. infant son ~~Mary~~^{M.} J. Davis.

Luanna M. Arrington 12 Apr 1829 17 Jan 1880

Annie S. Wife of John K. Brown.

B. 22 Jan 1857 d. 71 May 1904

David T. Arrington b. ^{25 May} 1811 d. 2 Mar 1871

Nannie C. Arrington, wife of David T.

B. 2 Aug 1822 d. 4 May 1902.

27 burials, 7 inscribed.

enclosed by decorative iron fence.

fairly large plot reserved No. 1/4 acre

marked.

Signal Hill?

Both sides of 616

100-1-180

90.7634A.

pres. owner Town of Man Pt.

(12/1974)

767-326 410,000

prev. owner nature Conservancy

5/1974

734-532

or 537

Nature Conservancy purch. 11 Apr 1974
from Rex Peters, ^{Trustee} John Bobby, Nancy L.
Bobby, Albert J. Fargo, Jean Fargo.

"ref. to as prop. of Wash. Suburban Realty of Va.

Wash. D.C. sec DB 56, p. 431

for plat + dedication by E.W. Koontz.

"and being" acq. by Rex Peters et al in

DB 437, p. 547, DB 413, p. 541, DB 413, p. 544

Surveyed by RB Thomas ~~in~~ 1974

plat dated 6 Apr 1973

100-1-180

616

J. Mills Hanson Bull Run Remembers

Signal Hill was the place from which the

"Wigwag" signal system was first

used in battle. Here, ^{From Confederate} ~~the~~ Lt. (later Captain)

E. P. Alexander ^{transmitted the} ~~warned~~ warning ^{on 21 July 1861} that previewed the first battle ^{of Bull Run.}

It was also the largest fortification to

~~built~~ along defense Manassas Junction:

It was an oblong-shaped fort which

ran along the crestline of Signal

Hill. Signal Hill is the highest

point in the Manassas vicinity

being about 400 feet above sea level.

Barricade placements for 16 guns

See plat of Wash. Suburban Realty Co. of Va.
Wash. D.C.

no no given. Book. 1 p. 42?

Streets named Grant, Douglas, Turner, ~~Masses~~
Brue, Washington, Booker, FF, P.W., Booker,
Lyons, Beauregard,

26 blocks, 72 lots each,

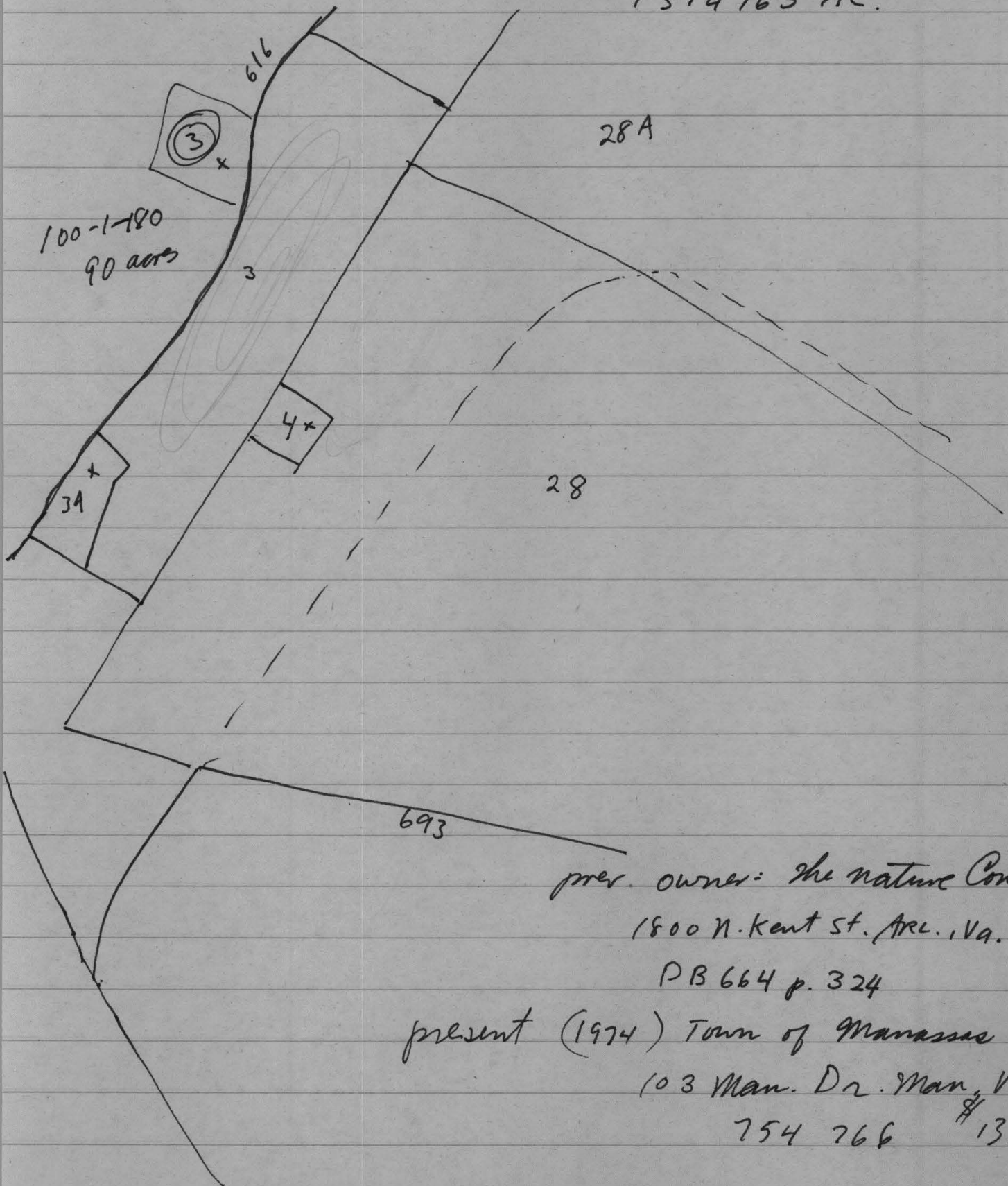
in 1907?

to have been devd. by

see DB 56 p. 431

Signal Hill.

99-1-3 + 100-1-180?
13.4965 AC.



prev. owner: the nature Conservancy
1800 N. Kent St. Arl., Va. (1972)
PB 664 p. 324

present (1974) Town of Manassas Park
103 Man. Dr. Man, Va.
754 766 # 136,419.

F.F. Lit.
8-31-80

Signal Hill.

"Future of Signal Hill Assured,"
in The Globe 12-28-72, p. 18.

Nature Conserv. purch 13 1/2 acre
Signal Hill site to hold in trust
for Maroon Pt.

Bought it from E.W. + Carol A. Hurst

See Frank Murphy

Arrington Family Cemetery is loc. on Roseberry farm.

Paul Arrington claims officer from S. Carolina buried in a
field on the prop.

"Buckhall Farm" in deed, shares a
common boundary w/ prop. of Dade Hore.

Signal Station may have been on Wilcoxen's
prop rather than Roseberry. [Josiah Wilcoxen,
buried at Liberia died at ~~middle~~

young age dur. Civil War. 16 Nov 1861, age 48
with Julia E. d. 14 Mar 1862 7

Joe Rotloff

Plan for development of Signal Hill
as a park.

Historic district.

Manassas Drive

E. W. Hurst + Carroll A. Hurst (1972)

DB 664 p. 75, 71,000

Rex Peters, trustee 664-67. (vacation)

streets + alleys, + lots. deed.

Sagin Hill. ~~Kitt~~.

Roseberry?

99-1-34? or 28 or 4

Albert H. Roseberry Jr. + Virginia G.

P.O. Box 175

5, 25, + 26 sm.

Man, Va. 22110.

house parcels owned by different
Roseberrys

99-1-4 is

9520 Birmingham Dr.

1953 Rambler brick.

stable, sw. pool, garage

DB 178-388.

.5 acre in 1954

Signal Hill

Development & Admin. Office.

Peabody St. - White Bldg.

1974.

Vera Kline.

historical overlay zone at Signal Hill.

Re: -
Zoning 73-7

records in PWC Planning Office
Signal Hill by map
appl. in 1972.

105 acres

Scott Winfield was ^{Chair.} Supv. Bd.

"Consisting of the Signal Hill Fortification and adjacent land located on Rt. 616 in Coles Magisterial District, P. W. C. & sometimes known as the "Powell Tract." as a historic landmark.
as per Bd. Supv. Resolution #17 Oct. 5, 1972.

105 acres located on the west side of S.R. 616, approx 500 ft. north of Rt. 689, and at the terminus of Rt. 669, 500 ft. east of the city of Manassas.

Dismissed June 18, 1979.

In 1978 (May) Chairman of Hist. Comm. with drew the zoning appl., thus terminating action on the case.

see DB - ? p. 72

22 Jan 1947 SLEDGE, WMH. + INEZ TO
POWELL, ORBUN V + HAZEL OGLE

H.C. initially called for rezoning of
approx 6 acres. Rez. 72-15

Bd of super. initiated Rez. 73-7,
c. 105 acres. in addition to the above.

Hist. Sig.

"From this area the first message ever spelled out
by flag communication on a battlefield was
sent. According to historians, 'there exists here
today an earth-work fort as perfect,
except for the leveling processes of time,
as it was when completed in 1861.'"

The rezoning took in only that portion of the
hill to the west of the ridge line,
dropping down to Runin Branch.
The part of S.H. east of the ridge
was not included.

"

Signal Hill Historical Zoning Map, Preserve It"

See P.N. 18 Oct. 1972 p. B-10
by Lynne Brandstaf.

RES. #14 19 FEB 1970
ORDINANCE
H.D. ZONE CH. 20,
H. COMM, CH. 21.